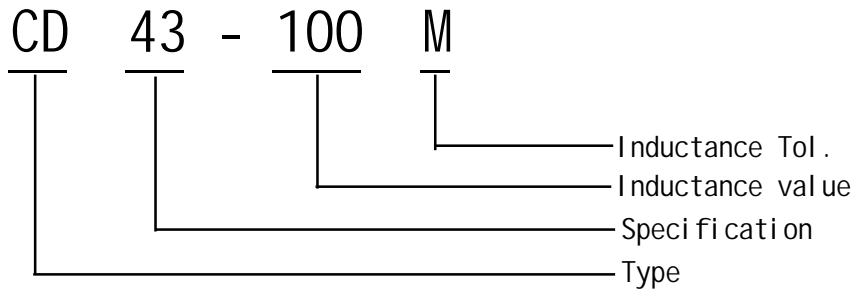


# SMD Power Inductors CD43 Series

## 贴片功率电感CD43 系列



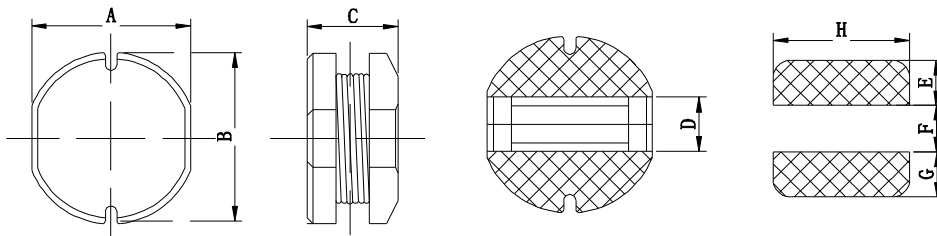
### I. Ordering Code:



※ Inductance Tol. J:  $\pm 5\%$ , K:  $\pm 10\%$ , M:  $\pm 20\%$ , N:  $\pm 30\%$ .

※ Inductance value. 1R0: 1.0uH, 100: 10uH, 101: 100uH, 102: 1000uH.

### II. Configuration & Dimensions: (mm)



Size	A	B	C(max)	D	E	F	G	H
CD43	4.00 $\pm$ 0.30	4.50 $\pm$ 0.30	3.50	1.50	1.80	1.20	1.80	4.50

### III. Materials :

- a. Core: Ferrite DR core
- b. Wire: Enamelled copper wire
- c. Terminal: Cu/Sn
- d. Encapsulate: Epoxy novolac molding compound
- e. Remark: Products comply with RoHS' requirements

### IV. General Specification :

- a. Storage temp. : -40 $^{\circ}$ C ---- +125 $^{\circ}$ C
- b. Operating : -40 $^{\circ}$ C ---- +105 $^{\circ}$ C
- c. Temp. rise : 40 $^{\circ}$ C Max. at rated current.



Specifications subject to change without notice. Please check our website for latest information. Released: 2012/12/18

Danxingda Shenzhen, China Tel: 0755-61303918 Fax: 0755-83462232 Web: <http://www.mydxd.com> E-mail: [lareina@mydxd.com](mailto:lareina@mydxd.com)



## CD43 Series

Part No.	L (uH)	Test Freq .(KHZ)	Tolerance	D.C.R( $\Omega$ )	Rated Current
				MAX	(A)
CD43-1R0N	1.00	100K/0.25V	$\pm 30\%$	20.0m	2.60
CD43-2R2M	2.20	100K/0.25V	$\pm 30\%$	42.0m	2.30
CD43-3R3M	3.30	100K/0.25V	$\pm 30\%$	51.0m	2.10
CD43-3R9M	3.90	100K/0.25V	$\pm 30\%$	72.8m	1.90
CD43-4R7M	4.7	100K/0.25V	$\pm 20\%$	76.0m	1.60
CD43-5R6M	5.6	100K/0.25V	$\pm 20\%$	83.0m	1.45
CD43-6R8M	6.8	100K/0.25V	$\pm 20\%$	0.100	1.35
CD43-8R2M	8.2	100K/0.25V	$\pm 20\%$	0.120	1.30
CD43-100M	10.0	1.0K/0.25V	$\pm 20\%$	0.150	1.00
CD43-120M	12.0	1.0K/0.25V	$\pm 20\%$	0.155	0.900
CD43-150M	15.0	1.0K/0.25V	$\pm 20\%$	0.195	0.800
CD43-180M	18.0	1.0K/0.25V	$\pm 20\%$	0.230	0.700
CD43-220M	22.0	1.0K/0.25V	$\pm 20\%$	0.270	0.600
CD43-270M	27.0	1.0K/0.25V	$\pm 20\%$	0.310	0.550
CD43-330M	33.0	1.0K/0.25V	$\pm 20\%$	0.345	0.500
CD43-390M	39.0	1.0K/0.25V	$\pm 20\%$	0.400	0.480
CD43-470M	47.0	1.0K/0.25V	$\pm 20\%$	0.525	0.400
CD43-560M	56.0	1.0K/0.25V	$\pm 20\%$	0.595	0.380
CD43-680M	68.0	1.0K/0.25V	$\pm 20\%$	0.740	0.330
CD43-820M	82.0	1.0K/0.25V	$\pm 20\%$	0.880	0.290
CD43-101M	100.0	1.0K/0.25V	$\pm 20\%$	1.20	0.260
CD43-121M	120.0	1.0K/0.25V	$\pm 20\%$	1.25	0.240
CD43-151M	150.0	1.0K/0.25V	$\pm 20\%$	1.60	0.220
CD43-181M	180.0	1.0K/0.25V	$\pm 20\%$	2.00	0.190
CD43-221K	220.0	1.0K/0.25V	$\pm 10\%$	2.35	0.180
CD43-271K	270.0	1.0K/0.25V	$\pm 10\%$	3.25	0.160
CD43-331K	330.0	1.0K/0.25V	$\pm 10\%$	3.55	0.150
CD43-391K	390.0	1.0K/0.25V	$\pm 10\%$	4.20	0.130
CD43-471K	470.0	1.0K/0.25V	$\pm 10\%$	4.90	0.120
CD43-561K	560.0	1.0K/0.25V	$\pm 10\%$	6.50	0.100

### VI. 额定电流 Reted Current:

电感值下降至初始值的10%或温度上升至40℃时的直流电流值中的最小值。(环境温度20℃)

This indicates the value of current when the inductance is 10% lower than its initial value at D.C. superposition or D.C. current when T=40℃ whichever is lower. (Ta=20℃)

### VII. 无铅制品 Lead-free

VIII. 测试仪器 Test instrument : HP4284A, 502BC, CH1062A.

